



Machaba Blue Safari

15 NIGHTS
FROM MAUN TO MAHÉ

The Most Extraordinary
**OKAVANGO &
OCEAN SAFARI**
You'll Ever Experience!

| | | |
|----------|---------------------------|-----------------------------|
| 3 NIGHTS | Machaba Camp | Okavango Delta – Botswana |
| 3 NIGHTS | Gomoti Plains Camp | Okavango Delta – Botswana |
| 1 NIGHT | Intercontinental OR Tambo | Johannesburg – South Africa |
| 1 NIGHT | Eden Bleu | Mahé – Seychelles |
| 7 NIGHTS | Alphonse Island | Alphonse Group – Seychelles |

*We invite you to surrender to the adventure of an African Safari,
coupled with an idyllic romantic island escape...*



MACHABA CAMP

GOMOTI PLAINS CAMP

ALPHONSE ISLAND

Experience the Best of the Best...



MACHABA CAMP

KHWAI REGION - OKAVANGO DELTA - BOTSWANA

The understated, '50s-style Machaba Camp is located in the game-rich 180,000ha Khwai concession of the Okavango Delta adjacent the Moremi Game Reserve. The Machaba tree is aptly considered the tree of life, and the camp is a lively place because of them, with game-viewing and bird-watching around Machaba Camp always an exciting experience that offers plenty to see at every turn.

Accommodation at Machaba strikes the perfect balance between class and comfort, with 10 Luxury Tents nestled in the treeline along the Khwai River and overlooking the gorgeous Moremi Game Reserve. Each tent features an en-suite bathroom, living area, and an intimate and romantic outdoor shower. Children are always welcome at Machaba, with two of the tents catering specifically to families.

Explore the magnificent environment on game drives, walking safaris and mokoros (traditional dugout canoe), indulge on some bush pampering in the privacy of your suite or just soak up the sights and sounds of the magnificent African bush.

GOMOTI PLAINS CAMP

GOMOTI WATERWAY - OKAVANGO DELTA - BOTSWANA

Situated on the edge of the Gomoti River system and floodplains in the centre of the Okavango Delta, Gomoti Plains Camp is nestled into evergreen riparian woodland with the central area featuring a beautifully outfitted large mess tent full of colour and style, housing the dining area and lounge, a perfect spot to relax in between morning and afternoon activities.

Accommodation is in ten classic safari tents (two of which are family tents). Each tent is tastefully furnished with safari-style décor and is equipped with stunning teak chairs and a wardrobe. All raised on wooden decks, the tents boast great views of the floodplains beyond, and each room has a shaded veranda.

Game drives take you along the river system and floodplains, or you can choose to take to the water in a mokoro canoe. Glide along the tranquil waterways and enjoy the Delta and its wildlife from a different angle - a wonderful tranquil way to explore the waterways.



ALPHONSE ISLAND

ALPHONSE ATOLL - SEYCHELLES

Seven degrees South of the Equator and 400 kilometers South-West of Mahé, Alphonse Island is blessed with one of the world's healthiest climates, and miles of unblemished shorelines, lagoons and sea flats.

Alphonse Island features a single exclusive lodge comprising of Beach Bungalows and Beach Suites set amongst lush tropical gardens just metres from the shoreline with scenic ocean views. The central dining and bar area allows guests to socialize alongside the sparkling pool and shoreline, with cuisine offering the very best of traditional Creole creations inspired by the sensuous island atmosphere.

Encounter an extraordinary array of wildlife and exceptional adventures... Trek the flats and discover the micro environments. Feed giant tortoises, unearth the history of Alphonse on a guided cycling tour. Dine under the stars, dive to new depths and visit one of the 30+ dive sites, surrounding Alphonse and encounter a magnificent array of marine life. Learn to fly fish, swim or snorkel amongst shoals of brightly coloured fish in the warm, turquoise waters of the Indian Ocean - the possibilities are endless.



MACHABA CAMP



GOMOTI PLAINS CAMP

OKAVANGO & OCEAN Deluxe Safari Package

PACKAGE INCLUSIONS & EXCLUSIONS

ITINERARY SUMMARY

FRIDAY DEPARTURES

- DAY 1 Charter flight from Maun to Machaba
Overnight Machaba Camp in a Luxury Tent [AI]
- DAY 2-3 On Safari in the Okavango Delta
Overnight Machaba Camp in a Luxury Tent [AI]
- DAY 4 Charter flight from Machaba to Gomoti
Overnight Gomoti Plains Camp in a Luxury Tent [AI]
- DAY 5-6 On Safari in the Okavango Delta
Overnight Gomoti Plains Camp in a Luxury Tent [AI]
- DAY 7 Charter flight from Gomoti to Maun
International flight from Maun to OR Tambo *[own account]*
Overnight at Intercontinental OR Tambo in a Deluxe King Room [BB]
- DAY 8 International flight from OR Tambo to Mahé *[own account]*
Transfer from Airport to Eden Bleu
Overnight at Eden Bleu Hotel in a Standard Room [BB]
- DAY 9 Transfer from Eden Bleu to Airport
Charter flight from Mahé to Alphonse
Overnight at Alphonse Island in a Beach Bungalow/Beach Suite
- [FB] DAY 10-15 Exploring and relaxing in paradise
Overnight at Alphonse Island in a Beach Bungalow/Beach Suite [FB]
- DAY 16 Charter flight from Alphonse to Mahé
Transfer from IDC Hangar to International airport.
Outward bound international flight from Mahé
International *[own account]*

PLEASE NOTE: Flights departing Johannesburg on Saturday arrive in Mahé too late for the connecting flight to Alphonse, therefore guests will arrive in Mahé on Friday and overnight at Eden Bleu Hotel on a B&B basis.

Flights departing Maun arrive in Johannesburg too late for the connecting flight to Mahé, therefore guests to overnight in Johannesburg at Intercontinental OR Tambo on a B&B basis.

MACHABA CAMP & GOMOTI PLAINS CAMP

RATES INCLUDE:

- Charter flight Maun / Machaba / Maun / Gomoti / Maun
- Return vehicle airstrip transfers
- 3 nights at Machaba Camp in a Luxury Safari Tent
- 3 nights at Gomoti Plains Camp in a Luxury Safari Tent
- All meals and snacks
- Activities : Game Drives, Mokoro & Walking Safaris
- Laundry
- Alcoholic & non-alcoholic beverages (excluding imported & premium drinks)
- Taxes
- Conservation & Community Levy

RATES EXCLUDE:

- International flights
- Travel insurance
- Visas
- Premium imported drinks
- Spa treatments, curio shop purchases and items of a personal nature
- Gratuities

ALPHONSE ISLAND

RATES INCLUDE:

- 7 nights accommodation in a Beach Bungalow / Beach Suite
- All Meals
- Water, tea and coffee
- Soft drinks during activities
- Charter flight Mahé / Alphonse / Mahé
- All hotel amenities and non-motorized, land based activities
- Complimentary scheduled communal activities
- Snorkelling equipment
- Watersport equipment (stand up paddle boards and kayaks)
- Flyfishing rod and reel rental
- Wi-Fi in public areas
- Laundry
- Conservation donations

RATES EXCLUDE:

- International flights
- Additional excursions and spa treatments
- Alcoholic & non alcoholic beverages
- Telephone charges, boutique & shop purchases and items of a personal nature
- Gratuities



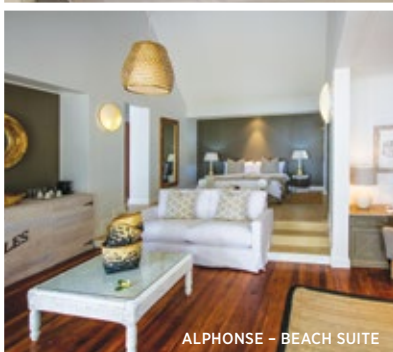
INTERCONTINENTAL OR TAMBO



EDEN BLEU



ALPHONSE - BEACH BUNGALOW



ALPHONSE - BEACH SUITE

2019 PACKAGE RATES

| SEASON | ACCOMMODATION | | PER PERSON | |
|--------------------------------------|---------------|----------------|--------------|-------------|
| | BOTSWANA | SEYCHELLES | SHARING FROM | SINGLE FROM |
| HIGH 1 Aug 2019 – 31 Oct 2019 | Luxury Tent | Beach Bungalow | US\$ 14 350 | US\$ 18 065 |
| | | Beach Suite | US\$ 17 300 | US\$ 26 460 |
| SHOULDER 1 Nov 2019 – 10 Jan 2020 | Luxury Tent | Beach Bungalow | US\$ 12 450 | US\$ 15 400 |
| | | Beach Suite | US\$ 15 420 | US\$ 23 800 |

Rates are subject to change based on currency fluctuation & availability

PAYMENT TERMS:

Reservations will be held for 2 weeks. We require a 50% deposit to confirm the booking, final payment is due 3 months prior to arrival.

CANCELLATION POLICY:

- A 10% fee shall be levied if cancellation is made more than 180 days prior to arrival.
- A 10% fee shall be levied if the reservation is moved to an alternative date within same season.
- A fee of 50% shall be levied if cancellation is between 180 and 90 days prior to arrival.
- A fee of 100% shall be levied if cancellation is 90 days or less prior to arrival.
- All cancellations and provisional bookings must be confirmed in writing.

INDEMNITY & INSURANCE:

- All activities require the client to sign an indemnity once on location.
- All clients require travel insurance to cover costs incurred due to flight delays for any reason.
- All clients require "From Scene of Accident Medivac Insurance".



For more information, or to book this package, please contact reservations
t +27 82 579 5249 e enquiries@machabasafaris.com
www.alphonse-island.com | www.machabasafaris.com



MACHABA
CLASSIC SAFARI CAMPS
BOTSWANA & ZIMBABWE

Est. 2012



MACHABA CAMP



GOMOTI PLAINS CAMP

OKAVANGO & OCEAN Deluxe Safari Package

PACKAGE INCLUSIONS & EXCLUSIONS

ITINERARY SUMMARY

FRIDAY DEPARTURES

- DAY 1 Charter flight from Maun to Machaba
Overnight Machaba Camp in a Luxury Tent [AI]
- DAY 2-3 On Safari in the Okavango Delta
Overnight Machaba Camp in a Luxury Tent [AI]
- DAY 4 Charter flight from Machaba to Gomoti
Overnight Gomoti Plains Camp in a Luxury Tent [AI]
- DAY 5-6 On Safari in the Okavango Delta
Overnight Gomoti Plains Camp in a Luxury Tent [AI]
- DAY 7 Charter flight from Gomoti to Maun
International flight from Maun to OR Tambo *[own account]*
Overnight at Intercontinental OR Tambo in a Deluxe King Room [BB]
- DAY 8 International flight from OR Tambo to Mahé *[own account]*
Transfer from Airport to Eden Bleu
Overnight at Eden Bleu Hotel in a Standard Room [BB]
- DAY 9 Transfer from Eden Bleu to Airport
Charter flight from Mahé to Alphonse
Overnight at Alphonse Island in a Beach Bungalow/Beach Suite [FB]
- DAY 10-15 Exploring and relaxing in paradise
Overnight at Alphonse Island in a Beach Bungalow/Beach Suite [FB]
- DAY 16 Charter flight from Alphonse to Mahé
Transfer from IDC Hangar to International airport.
Outward bound international flight from Mahé
International *[own account]*

PLEASE NOTE: Flights departing Johannesburg on Saturday arrive in Mahé too late for the connecting flight to Alphonse, therefore guests will arrive in Mahé on Friday and overnight at Eden Bleu Hotel on a B&B basis.

Flights departing Maun arrive in Johannesburg too late for the connecting flight to Mahé, therefore guests to overnight in Johannesburg at Intercontinental OR Tambo on a B&B basis.

MACHABA CAMP & GOMOTI PLAINS CAMP

RATES INCLUDE:

- Charter flight Maun / Machaba / Gomoti / Maun
- Return vehicle airstrip transfers
- 3 nights at Machaba Camp in a Luxury Safari Tent
- 3 nights at Gomoti Plains Camp in a Luxury Safari Tent
- All meals and snacks
- Activities : Game Drives, Walking Safaris, Mokoro (Water Dependant)
- Laundry
- Alcoholic & non-alcoholic beverages (excluding imported & premium drinks)
- Taxes
- Conservation & Community Levy

RATES EXCLUDE:

- International flights
- Travel insurance
- Visas
- Premium imported drinks
- Spa treatments, curio shop purchases and items of a personal nature
- Gratuities

ALPHONSE ISLAND

RATES INCLUDE:

- 7 nights accommodation in a Beach Bungalow / Beach Suite
- All Meals
- Water, tea and coffee
- Soft drinks during activities
- Charter flight Mahé / Alphonse / Mahé
- All hotel amenities and non-motorized, land based activities
- Complimentary scheduled communal activities
- Snorkelling equipment
- Watersport equipment (stand up paddle boards and kayaks)
- Flyfishing rod and reel rental
- Wi-Fi in public areas
- Laundry
- Conservation donations

RATES EXCLUDE:

- International flights
- Additional excursions and spa treatments
- Alcoholic & non alcoholic beverages
- Telephone charges, boutique & shop purchases and items of a personal nature
- Gratuities



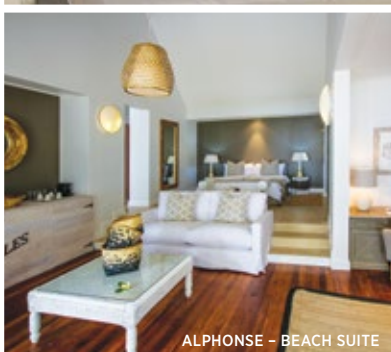
INTERCONTINENTAL OR TAMBO



EDEN BLEU



ALPHONSE - BEACH BUNGALOW



ALPHONSE - BEACH SUITE

2020 PACKAGE RATES

| SEASON | ACCOMMODATION | | PER PERSON | PER PERSON |
|---|---------------|----------------|--------------|-------------|
| | BOTSWANA | SEYCHELLES | SHARING FROM | SINGLE FROM |
| LOW 11 Jan 2020 - 31 Mar 2020 | Luxury Tent | Beach Bungalow | US\$ 12 070 | US\$ 13 088 |
| | | Beach Suite | US\$ 15 045 | US\$ 21 488 |
| SHOULDER 1 Apr 2020 - 31 May 2020 | Luxury Tent | Beach Bungalow | US\$ 13 195 | US\$ 16 235 |
| | | Beach Suite | US\$ 16 170 | US\$ 25 270 |
| HIGH 1 Jun 2020 - 31 Oct 2020 | Luxury Tent | Beach Bungalow | US\$ 15 355 | US\$ 19 259 |
| | | Beach Suite | US\$ 18 330 | US\$ 27 659 |
| SHOULDER 1 Nov 2020 - 10 Jan 2021 | Luxury Tent | Beach Bungalow | US\$ 13 195 | US\$ 16 235 |
| | | Beach Suite | US\$ 16 170 | US\$ 25 270 |

Rates are subject to change based on currency fluctuation & availability

PAYMENT TERMS:

Reservations will be held for 2 weeks. We require a 50% deposit to confirm the booking, final payment is due 3 months prior to arrival.

CANCELLATION POLICY:

- A 10% fee shall be levied if cancellation is made more than 180 days prior to arrival.
- A 10% fee shall be levied if the reservation is moved to an alternative date within same season.
- A fee of 50% shall be levied if cancellation is between 180 and 90 days prior to arrival.
- A fee of 100% shall be levied if cancellation is 90 days or less prior to arrival.
- All cancellations and provisional bookings must be confirmed in writing.

INDEMNITY & INSURANCE:

- All activities require the client to sign an indemnity once on location.
- All clients require travel insurance to cover costs incurred due to flight delays for any reason.
- All clients require "From Scene of Accident Medivac Insurance".



For more information, or to book this package, please contact reservations
t +27 82 579 5249 e enquiries@machabasafaris.com
www.alphonse-island.com | www.machabasafaris.com



MACHABA
CLASSIC SAFARI CAMPS
BOTSWANA & ZIMBABWE

Est. 2012