



# MAKING DONATIONS AND HOW TO GET INVOLVED

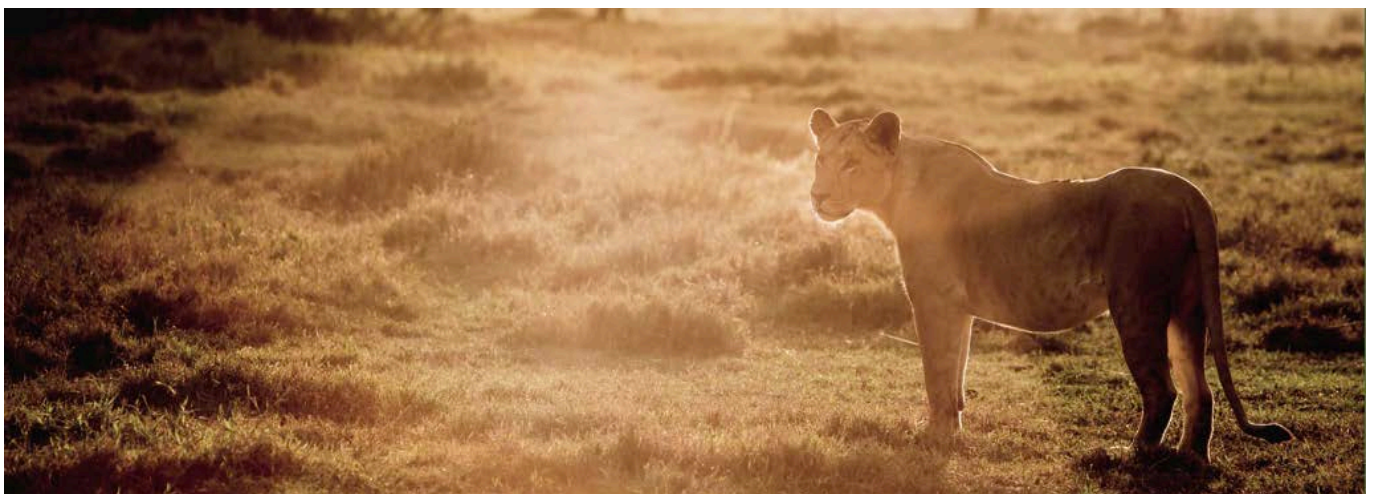
## THE SAFARI COLLECTION

The Safari Collection is heavily focused on sustainability and giving back. It is at the heart and soul of everything we do. Our ethos is to be low impact, community and conservation orientated to the core and to have a significant positive influence on the people and environment around us.

By choosing The Safari Collection you have already made a direct contribution to our Sustainability Programmes and the future of Kenya. Anyone who would like to contribute further can do this in two main ways:

- Making donations to our projects – Throughout this document you will find ideas and at the end you will find a MENU OF GIVING but if you would like more information on specific projects and how to donate please email: [sustainability@thesafaricollection.com](mailto:sustainability@thesafaricollection.com)
- Taking part – We offer opportunities to fund and take part in our projects. Please email [sustainability@thesafaricollection.com](mailto:sustainability@thesafaricollection.com) for more information.

Following is some further information on how guests can donate or get involved at each of our four properties.





### GIRAFFE MANOR

#### HOW YOUR STAY CONTRIBUTES ALREADY:

- ROTHSCHILD'S GIRAFFE CONSERVATION AND BREEDING – Giraffe Manor is a breeding centre for the highly endangered Rothschild's Giraffe. Since the breeding project started in the 1960s Rothschild's giraffe numbers in the wild have risen from around 100 to 800.
- AFRICAN FUND for ENDANGERED WILDLIFE (AFEW) – For each guest that stays at Giraffe Manor, The Safari Collection donates \$10 to AFEW and their wildlife conservation projects across Kenya.

#### TAKING PART:

- KAREN C PRIMARY SCHOOL – Visit the Karen C Primary School and meet the teachers and children – free.
- ONE HORIZON – Volunteer to work at a One Horizon feeding centre, school or women's centre for the a day in one of Nairobi's slums – around \$175 per person per day depending on programme.

#### CONTRIBUTE FINANCIALLY:

- Make a donation to the KAREN C primary school to buy textbooks or help with providing school meals.
- Make a donation to one of The Safari Collection's health projects such as a dental mission or eye mission to offer medical help to those unable to afford it.





### SALA'S CAMP

#### HOW YOUR STAY CONTRIBUTES ALREADY:

- **PARK FEES** - Each guest contributes to the running of the Maasai Mara by paying a \$70 park fee which is essential to funding the running costs of the reserve and protecting its incredible wildlife populations.
- **CONSERVATION FEES** - Each guest contributes \$40 in a conservation fee which is distributed among the local communities adjacent to the reserves creating an enduring link between conservation and development.
- **RHINO CONSERVATION** - The camp is situated in a rhino sanctuary area and The Safari Collection donates \$5 per night for each guest to the Rhino Monitoring Team to assist with fuel, training and their daily activities.

#### TAKING PART:

- **MARA CHEETAH PROJECT** – Have lunch with the Mara Cheetah Project researchers and hear all about their work – free but subject to availability.
- **PREDATOR HUB** – Visit the Predator Hub Research Centre and meet the Mara Cheetah Project and Mara Lion Project researchers and discover more about their conservation of big cats – free but may incur a cost for exclusive use of vehicle and subject to availability.
- **BIG CAT CONSERVATION** – Spend a day with our conservation vehicle monitoring big cats in the Maasai Mara – free.
- **BIG CAT MONITORING** – Send in photos of lion and cheetah sightings to the Mara Cheetah Project and Mara Lion Project to assist them with their population monitoring – free.

#### CONTRIBUTE FINANCIALLY:

- Make a donation to one of The Safari Collection's health projects such as a dental mission or eye mission to offer medical help to those unable to afford it.
- Make a donation to the Mara Cheetah Project to assist their conservation work.
- Make a donation towards the running costs of our conservation vehicle to protect cheetah and lion populations in the Maasai Mara.
- Sponsor a TEAMTalk project with the local communities focusing on health, female empowerment, FGM reduction and HIV awareness.



### SOLIO LODGE

#### HOW YOUR STAY CONTRIBUTES ALREADY:

- CONSERVATION FEES - Each guest pays an \$80 conservation fee towards the running of the Solio Game Conservancy and its rhino conservation programme. There are over 250 rhinos on Solio Game Conservancy and it is internationally recognized as the most successful private rhinoceros breeding conservancy in Kenya. It is responsible for having trans-located over 100 black and 60 white rhinoceros to other parts of Kenya over the years, including 6 to Uganda.

#### TAKING PART:

- RHINO CONSERVATION – Have dinner with Felix, one of the world’s foremost rhino conservation experts – free but subject to availability.
- ANTI-POACHING PONY PATROL – Spend a day with the Mount Kenya Trust anti-poaching pony patrols riding in the Mount Kenya national park - \$150 per person minimum donation.
- YOUNG CONSERVATIONISTS – Visit a local school with your guide to hold an art competition and take the winners for a game drive on Solio Conservancy - \$450 per group to cover the cost of exclusive use of vehicle for a day.

#### CONTRIBUTE FINANCIALLY:

- Make a donation to one of The Safari Collection’s health projects such as a dental mission or eye mission to offer medical help to those unable to afford it.
- Make a donation to our school building programme to help local children to get the best education in life.
- Sponsor a high achieving student to attend secondary school through our sponsorship and mentoring programme.
- Sponsor a TEAMTalk project with the local communities focusing on health, female empowerment, FGM reduction and HIV awareness.





### SASAAB

#### HOW YOUR STAY CONTRIBUTES ALREADY:

- CONSERVATION FEES - Each guest pays a \$40 conservation fee towards the running of the Westgate Conservancy on which Sasaab is situated. There are over 600 families living in the Westgate Conservancy and the conservation fee contributes to the daily running costs of the conservancy and wildlife management, as well as providing clean water, building schools and maintaining dirt roads. Bringing tourism to the area has for the first time allowed the community to see the value of having wildlife in their midst and helped enormously to reduce human-wildlife conflict. As a result wildlife is increasing in the area year on year.
- SAMBURU NR FEES - Each guest contributes to the running of Samburu National Reserve by paying a \$70 park fee which is an essential contribution to the running costs of the reserve to secure its unique wildlife for future generations.

#### TAKING PART:

- EWASO LIONS – Visit the Ewaso Lion research centre and meet the team protecting lions in northern Kenya – subject to availability and a donation required.
- EWASO LIONS – Have dinner with conservationists Shivani or Jeneria from the Ewaso Lions team and find out more about the challenges of lion conservation in Kenya – subject to availability.
- GREVY'S ZEBRA TRUST – Visit the Grevy's Zebra Trust research camp – subject to availability.
- SAMBURU VISIT – Visit a local school or Samburu village with your guide – free and it should be noted this is an authentic experience.
- WOMEN'S CO-OPERATIVE – Visit the women's beading co-operatives at Westgate Village.
- SAFE Samburu – Join the SAFE Samburu team on one of their educational performances at a marketplace or village – during weeks when they are performing only.

#### CONTRIBUTE FINANCIALLY:

- Make a donation to one of The Safari Collection's health projects such as a dental mission or eye mission to offer medical help to those unable to afford it
- Make a donation to our School Food programme which provides free school meals at two schools close to the lodge.
- Make a donation to the SAFE Samburu project which focuses on community issues such as FGM, HIV and early marriage.
- Buy seed for grasslands rehabilitation.
- Sponsor a high achieving student to attend secondary school through our sponsorship and mentoring programme.





## MENU OF GIVING

This MENU OF GIVING is designed to give potential donors ideas for what types of projects they are able to donate to and how their donations might be used. It is not exhaustive and there are many other potential projects to sponsor. All sizes of donations are hugely important to our sustainability programme and greatly appreciated.

**100%** of donations are used for the project specified by the donor and there are **NO ADMIN COSTS OR OTHER EXPENSES** deducted. For more information on any of this menu please contact [sustainability@thesafaricollection.com](mailto:sustainability@thesafaricollection.com)

### **\$100**

Donate to Ewaso Lions or the Mara Cheetah Project to assist them with their vital big cat conservation work in Kenya.

### **\$500**

Feed an entire school for a month. Better nutrition at school is the key ingredient to improved performance in the classroom.

### **\$1000**

Sponsor a SAFE Samburu project in northern Kenya helping to focus on combating issues such as FGM, HIV and early marriage.

### **\$2000**

Run the Conservation Vehicle for a year monitoring big cats in the Maasai Mara.

### **\$5000**

Fund a high achieving student from a poor background through secondary school via our sponsorship programme.

### **\$10,000**

Run a week long medical project bringing treatments to communities in remote areas without access to regular healthcare.

### **\$100,000**

Rebuild a primary school and give the gift of education to thousands of students for years to come.

## TAX DEDUCTIBLE DONATING

- In the USA donations can be made through a tax deductible 501 3 c status
- In the UK donations can be tax deductible through registered charity status



## RUNNING AN ENTIRE PROJECT

Every year The Safari Collection runs a number of different health, conservation, education, and community projects around Kenya. If you would like to join one of our specialist teams for a project please contact [sustainability@thesafaricollection.com](mailto:sustainability@thesafaricollection.com) to find out more about making a donation and getting involved in the planning and fundraising for an entire project.

This is often an incredibly rewarding addition to a visit to Kenya and each project will be run and designed with consideration to the requirements of the donors.



THANK YOU